



ELECTRICAL SAFETY ACTIVITY SHEET

Recommended for Grades K-5

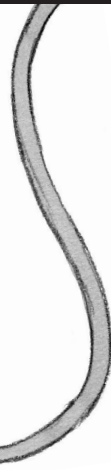
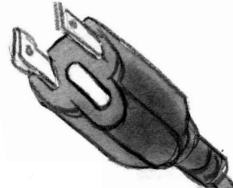
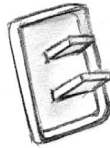
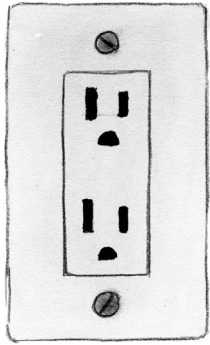
Visit us online at: www.e-smartonline.net/xcelenergy/

Brought to you by:

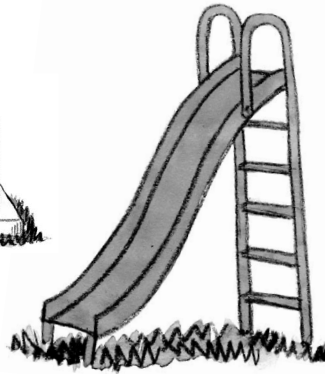
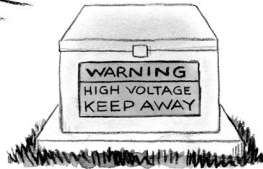
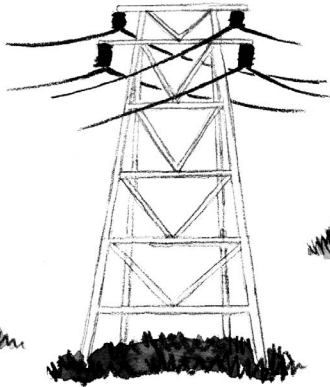


SAFE OR UNSAFE??

Put an **X** on the items that are **NOT SAFE** to put into an electrical outlet.



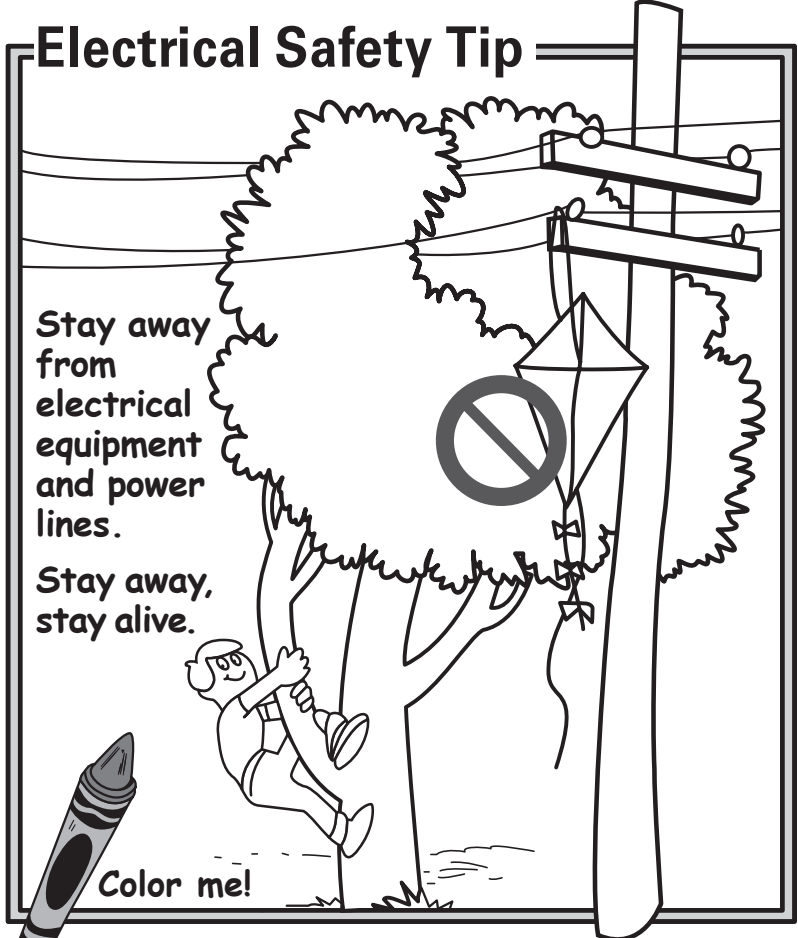
Put an **X** on the outdoor equipment that is **NOT SAFE** to climb.



Electrical Safety Tip

Stay away from electrical equipment and power lines.

Stay away, stay alive.



Color me!

Call Before You Dig: Please call 811 if you plan to dig or move earth in any way—even just planting a tree or shrub. This free service will arrange for marking underground natural gas and electric lines so you can dig a safe distance away from them. After you call, wait your state's required time before digging—at least two to three working days.



Know what's below. Call before you dig.

- Put an **X** on the key, paper clip, and fork.
- Only the plug and the safety cap are safe to put into an outlet.
- Put an **X** on the substation, the tower, and the transformer box. Only the slide is safe to climb.

Electrical Safety Activity Answer Key